

Apartment 28

Four Bedrooms Two Bathrooms

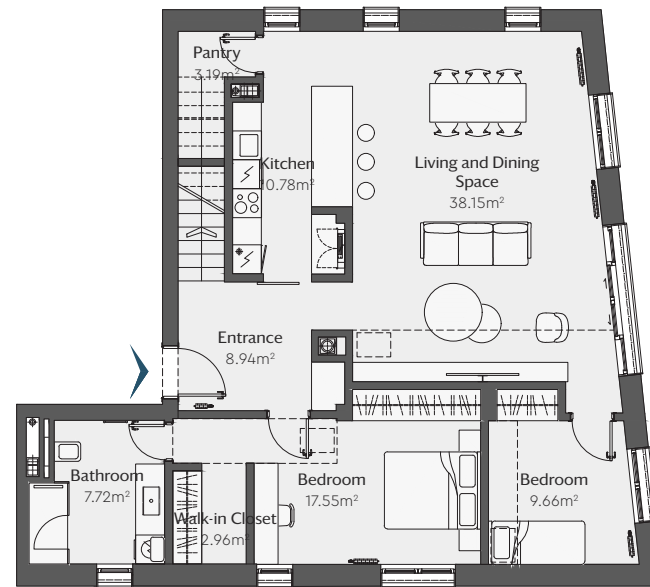
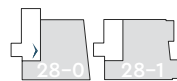
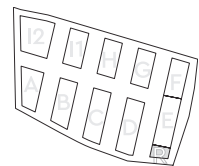
R-0-S1

Building	R
Floors	0,1
Interior area	200.55m ²
Terraces	7.76m ²
Total area	208.31m²
Level 1	98.96m ²
Level 2 with Terraces	109.35m ²

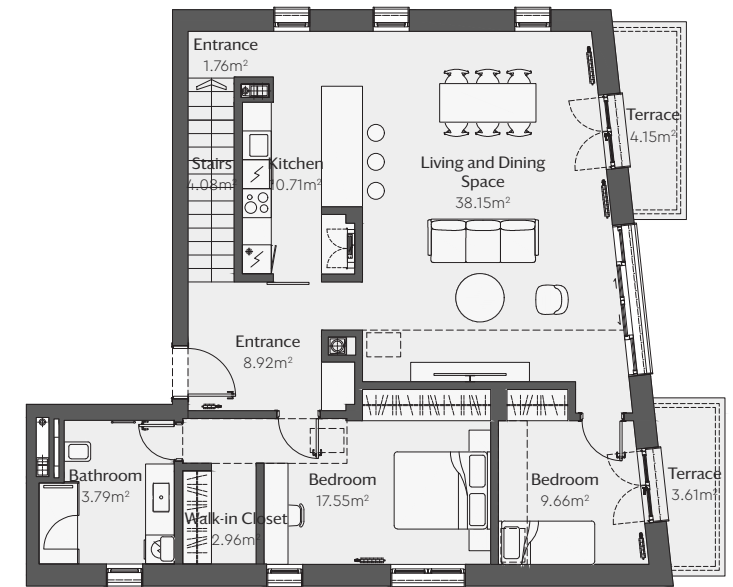
Location

IN COMPLEX

IN BUILDING



FLOOR 0



FLOOR 1

All dimensions are approximate and subject to normal construction variances and tolerances.
Plans and dimensions may contain minor variations from floor to floor. The area on this floor plan exceeds the usable area.

